

# Sunset




- [Main](#)
- [Travel](#)
- [Garden](#)
- [Home](#)
- [Food and Wine](#)
- [Online Community](#)
- [The Magazine](#)
- [Marketplace](#)

 [Search](#)

- [Blogs](#)
- [Video](#)
- [Sweepstakes](#)
- [Sunset Events](#)



« [The Late Show Gardens](#) | [MAIN](#) | [Compost it!](#) »

## More brave paint

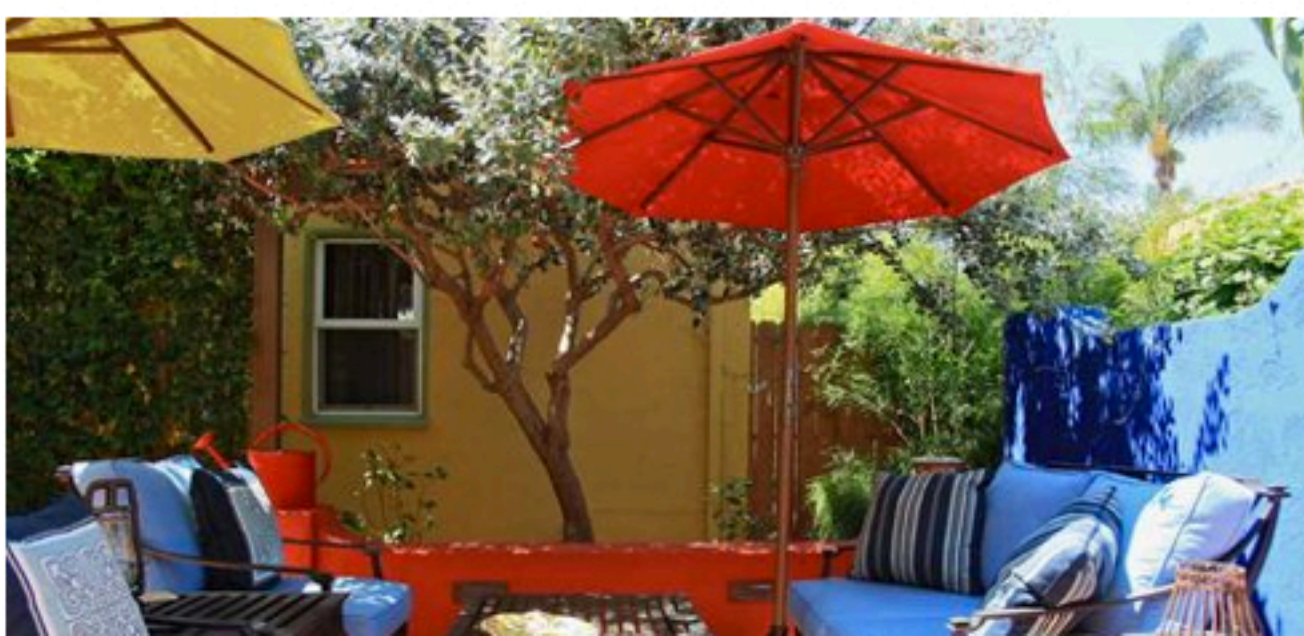
Posted by [Sunset](#), September 3, 2009 in [Furnishing the garden](#) , [People](#) , [Techniques](#)

By [Sharon Cohoon](#), *Sunset* senior garden writer

We wrote about [a garden with dark purple walls](#) recently. (Suzanne McKeivitt's house with its Approaching Storm paint). Here's another wonderfully brave garden. Three primary colors in one small patio! The mustard yellow of the house, a tall cobalt blue wall, and a shorter tomato red wall. The plants are still young but eventually, there will be blue agapanthus spilling over the red wall and Tropicana cannas flanking the blue one, and the color will be even more riotous.

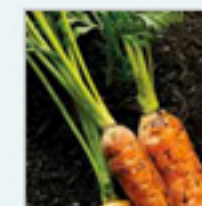
But it's already a wonderfully energizing space. Makes apache tan and adobe white seem pretty dull, doesn't it?

Fullerton landscape architect [Alison Terry](#) designed the garden. The home's Spanish colonial architecture and its owner's bold personality inspired the space. There are [more details](#) from this project on her website.



## About This Blog

- › [Contributors](#)
- › [E-mail Us](#)
- › [Subscribe to Our Newsletter](#)
- › [RSS](#)



## Search This Blog

 [Search](#)

## Recent Posts

- › [Osakazuki: the best red Japanese maple](#)
- › [Succulent greeting. Get it?](#)
- › [How to open a pomegranate \(in a tux\)](#)

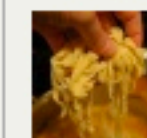
Advertisement



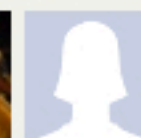
**Sunset Magazine** on Facebook

[Like](#)

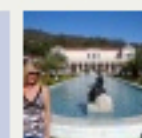
45,399 people like **Sunset Magazine**.



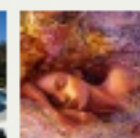
Steph



Zeetha



Joanne



Melissa



Diane

[Facebook social plugin](#)

## Categories

- › [Art](#)
- › [Books](#)
- › [Containers](#)
- › [Ecology](#)
- › [Edibles](#)
- › [Events](#)
- › [Furnishing the garden](#)
- › [Garden lore](#)
- › [Gift](#)
- › [Hardscape](#)